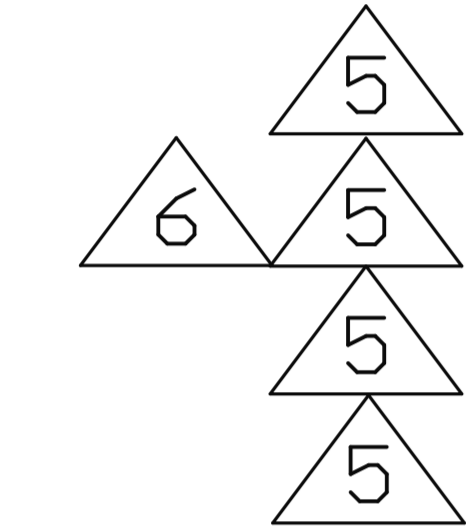


Symbol	Count	Hole Size	Tolerance	Plated	Hole Type	Drill Layer Pair
A	52	8.00mil	+3/-8mil	PTH	Round	Top Layer - Bottom Layer
B	34	10.00mil	+3/-10mil	PTH	Round	Top Layer - Bottom Layer
C	4	15.00mil	+3/-15mil	PTH	Round	Top Layer - Bottom Layer
D	331	18.00mil	+3/-18mil	PTH	Round	Top Layer - Bottom Layer
E	20	45.00mil	+/-3mil	PTH	Round	Top Layer - Bottom Layer
F	5	72.00mil	+/-3mil	PTH	Round	Top Layer - Bottom Layer
	446 Total					

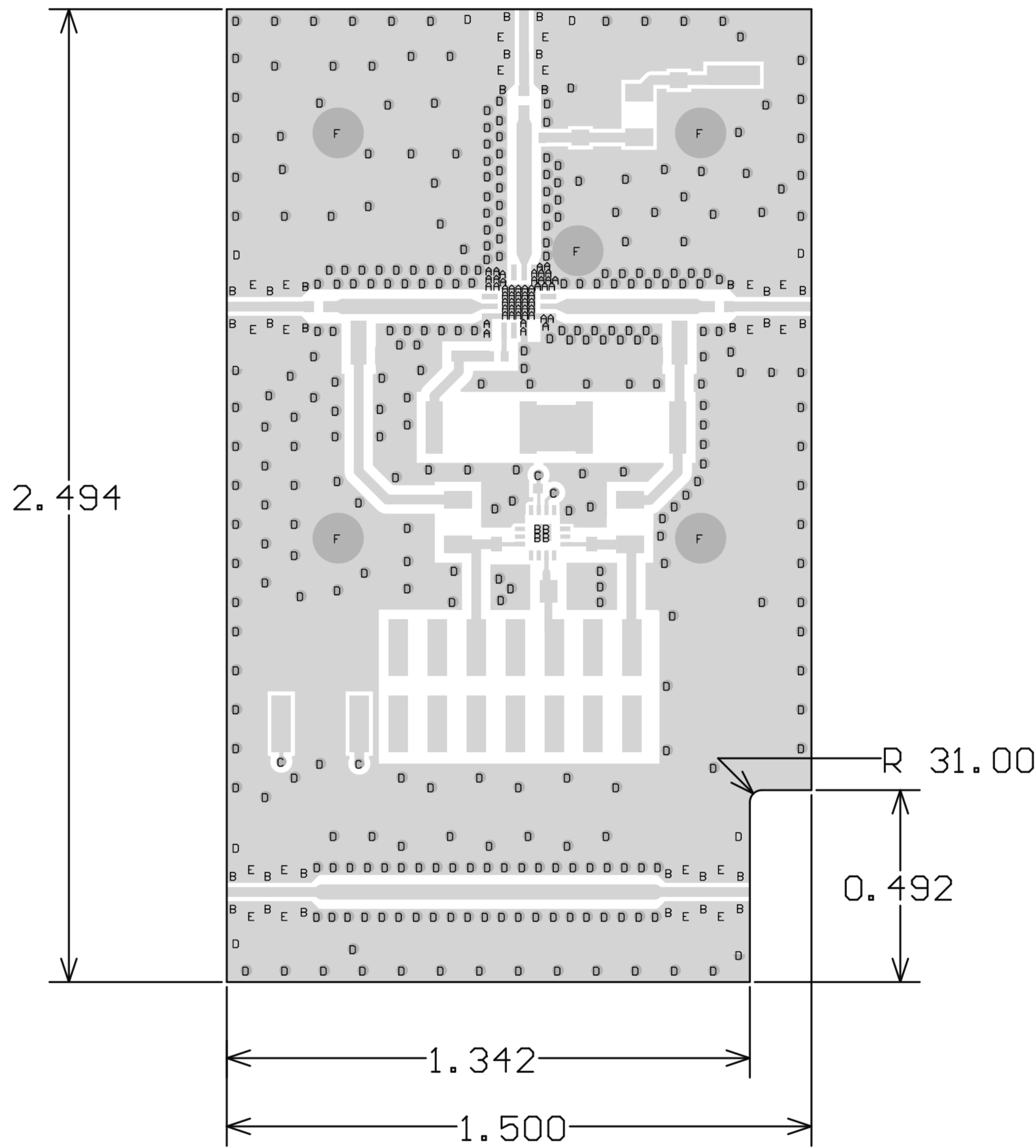


- NOTES:
- MATERIAL:
DIELETRIC: R04350 / R04450F / FR4
STARTING COPPER FOIL ON ALL LAYERS SHALL BE 1/2 OZ.
COPPER ON PRIMARY AND SECONDARY SHALL BE PLATED UP AN ADDITIONAL 1 OZ.
MATERIAL STACKUP, THICKNESS, AND STARTING COPPER FOIL PER DETAIL 'A'.
FINAL BOARD THICKNESS: .031 - .039 INCH.
 - FINISH: PRIMARY AND SECONDARY SIDE FINISH;
ELECTROLESS NICKEL/IMMERSION GOLD (ENIG) PER IPC-4552 LATEST REVISION.
THERE SHALL BE NO PITS, PIN HOLES, SCRATCHES OR NODULES WITHIN EXPOSED METAL AREAS
SHALL PASS SOLDERABILITY TESTING PER IPC-J-STD-003 LATEST REVISION.
STACKUP REPRESENTS FINISHED THICKNESS.
 - PCB SHALL BE BUILT PER IPC-6012 CLASS 2 AND CONFORM TO IPC-A-600 CLASS 2 LATEST REVISIONS.
 - ALL HOLES TO BE PLATED THRU UNLESS OTHERWISE SPECIFIED.
ALL FINISHED DRILL HOLE SIZES APPLY AFTER PLATING.
COPPER PLATING IN THROUGH HOLES WILL BE 0.001'' AVERAGE WITH AN
ABSOLUTE MINIMUM OF 0.0007''.
 - DIMENSIONS SHOWN ARE FOR LOCATION OF 0,0 FOR THE DRILL FILE.
ALL 8, 10, 15, AND 18 MIL HOLES SHALL BE FILLED WITH NON-CONDUCTIVE MATERIAL,
CAPPED OVER, AND PLANARIZE FLAT.


6. ALL 15 MIL FHS SHALL HAVE HOT VIA REMOVAL OR BACKDRILL OF SECONDARY SIDE PADS.
REMOVAL OF SECONDARY SURFACE CONNECTION SHALL BE ACHIEVED BY EITHER PROCESS.
LAYER 3 INTERCONNECT SHALL BE RETAINED AFTER REMOVAL OF EXTERNAL PAD ON SECONDARY SIDE.

- LPI SOLDER MASK COATING SHALL CONFORM TO IPC-SM-840, CLASS T. SMOBC. PRIMARY SIDE ONLY. COLOR BLUE.
- SILKSCREEN ON PRIMARY SIDE SHALL BE WHITE NON-CONDUCTIVE EPOXY INK.
REMOVE ANY SILKSCREEN ON EXPOSED PADS.
- DIMENSIONS SHOWN ARE FOR LOCATION OF 0,0 FOR THE DRILL FILE.
- ALL DIMENSIONS ARE SHOWN FINAL.
- GROUND FILL SHALL EXTEND TO BOARD EDGES UNLESS OTHERWISE NOTED.
EXPOSED COPPER ON BOARD EDGE SHALL BE ACCEPTABLE.
- ALL MATERIALS DESCRIBED IN THIS DOCUMENT/DRAWING SHALL BE IN COMPLIANCE WITH
AND CONTAIN NO SUBSTANCES RESRICTED OR REQUIRING SPECIAL RECLAMATION UNDER
THE LATEST RoHS, WEEE OR ELV DIRECTIVES.

X	MADR-009150-001SMB
NEXT ASSY	USED ON
APPLICATION	



Primary Side (Phy 1)

UNLESS OTHERWISE SPECIFIED INTERPRET DRAWING PER ASME Y14.5 DO NOT SCALE THIS DRAWING	UNLESS OTHERWISE SPECIFIED DIMENSIONS ARE IN INCHES		<div>MACOM</div> <div>WWW.MACOM.COM</div>		TITLE <div>PRINTED BOARD, SMB, MADR-009150</div>
	TOLERANCES ON				
	DECIMALS	ANGLES			
NOTE: THIS DRAW INCORPORATES THIRD ANGLE PROJECTION		<div><div><div>.X ± .1</div><div>.XX ± .02</div><div>.XXX ± .005</div><div>.XXXX ± .0005</div></div><div>± 0.5</div></div>			
MACOM Technology Solutions CONFIDENTIAL INFORMATION SUBJECT TO NDA					
<div>The information contained in this document or material is the valuable and confidential property of MACOM Technology Solutions Holdings, Inc. and/or its subsidiaries or affiliates. Collectively, MACOM's, provided to you subject to a non-disclosure agreement between you and MACOM solely for use in supporting MACOM's business as and to the extent MACOM authorizes in writing from time to time. This information shall be held in strictest confidence and shall not be reproduced, published, disclosed to others, or used for any purpose except as and to the extent specifically authorized by MACOM in a separate written agreement. Permission is granted for reproduction, this legend must be included in any and all copies. This document or material shall be promptly returned to MACOM or destroyed upon request, completion of the use for which it was made available to recipient, or termination of MACOM's relationship with recipient, whichever first occurs.</div>					
UNLESS OTHERWISE SPECIFIED					
63 ALL OVER		SIZE	DRAWING NO.		REVISION
MATERIAL		B	PT-0009447		D
SEE NOTE 1					
FINISH		SCALE:	PACKAGE		
SEE NOTE 2		1/1	TYPE: 3mmPQFN50P-16LD	SHEET 1	OF 1